



Starter

PART# 140-465

Core Identification Sheet

For your starter to be an acceptable 140-465CORE it must be complete, fully assembled, with no broken mounting flanges.

It must also have the features as called out in the photo below to comply as “rebuildable.”

Return Cores that do not meet these requirements are ineligible for core credit and will be rejected.

1. M418 on the case.
2. Starter drive (pinion/gear) as depicted in **Figure B** photo below.
3. Starters with the M418 designation on the case that have the **Figure C** style pinion/gear will be **accepted for a 50% reduced core credit**.

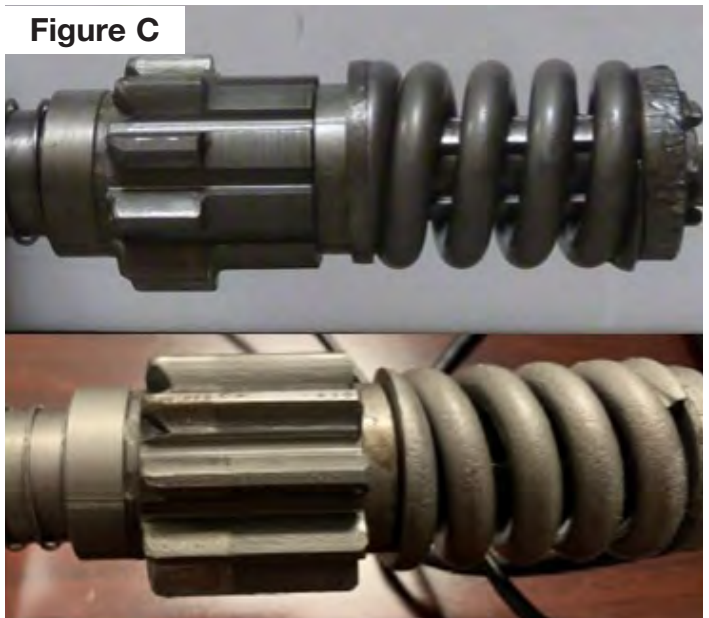
Figure A



Figure B



Figure C



Rejected cores will be returned or discarded. Look for your confirmation email and open the attachment for details.