



Wiper Gear with Shaft & Wiper Gear Motor

PART# 145-555 & 145-558

Supplemental Information & Instructions For: MGB GT (from (c)158231, 1969 on)

440 Rutherford St. Goleta, CA 93117
1-800-667-7872 • FAX 805-692-2525 • www.MossMotors.com

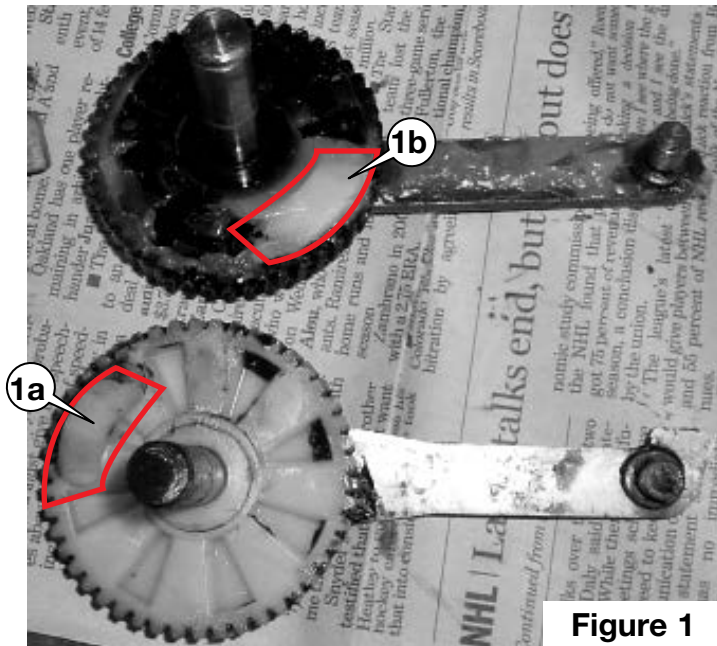


Figure 1



Figure 2

At this time, there is a single wiper motor gear and wiper motor being sold for both the 69-80 MGB roadsters and all MGB GTs. Installed in an MGB roadster, it will work exactly as it should. The same motor Installed in a GT will park the wipers 180 degrees from where they ought to because roadsters and GTs park in opposite directions. The park position is controlled by a kidney bean shaped “bump” on the back of the gear. If the gear is seen as a clock face, in a GT, the “bump” will be found between 10 and 11 (1a, 2a). If the wiper motor is for a roadster, which is true for the new wiper motors

and gears available today, the “bump” will be between 4 and 5 (1b). To make this wiper motor work properly in a GT, the “bump” must be popped off the gear face and repositioned in the 10-11 position (2a). To do this, it will be necessary to partially disassemble the wiper motor, but this is really quite simple. The only tricky bit is removing the circlip that holds the gear in place without it zinging off into a dusty corner of your garage.

That clip is not available at this time, so take care.

For questions or comments please contact:

Moss Motors, Ltd.
440 Rutherford Street, Goleta, California 93117
In the US & Canada Toll Free (800) 667-7872
LOCAL (805) 681-3400 FAX (805) 692-2510



Moss Europe Ltd.
Unit 16 Hampton Business Park Bolney Way
Feltham TW13 6DB, United Kingdom
In the UK: 020-8867-2020 FAX: 020-8867-2030