

1 Supplemental Information & Instructions
2 for
3 **370-678 Kit, Carburettor, HIF 44**
4 **Used on Late MGB to Replace Single ZS Carb**

5
6 **Ref Description**

- A Mixture Adj Screw
- B Fuel Inlet
- C To Evap Canister
- D Crankcase Vent
- E Vacuum to Distributor
- F Throttle Cable Attached here
- G MGTD Shock Link Bushing*
- H Throttle Adjustment Screw
- J Choke Cable Guide Tube

7
8
9
10 * The MGTD Shock Link Bushing is not included
11 with the carburettor kit. It was used to hold the
12 HIF44 upright for these photographs.

Fig 1

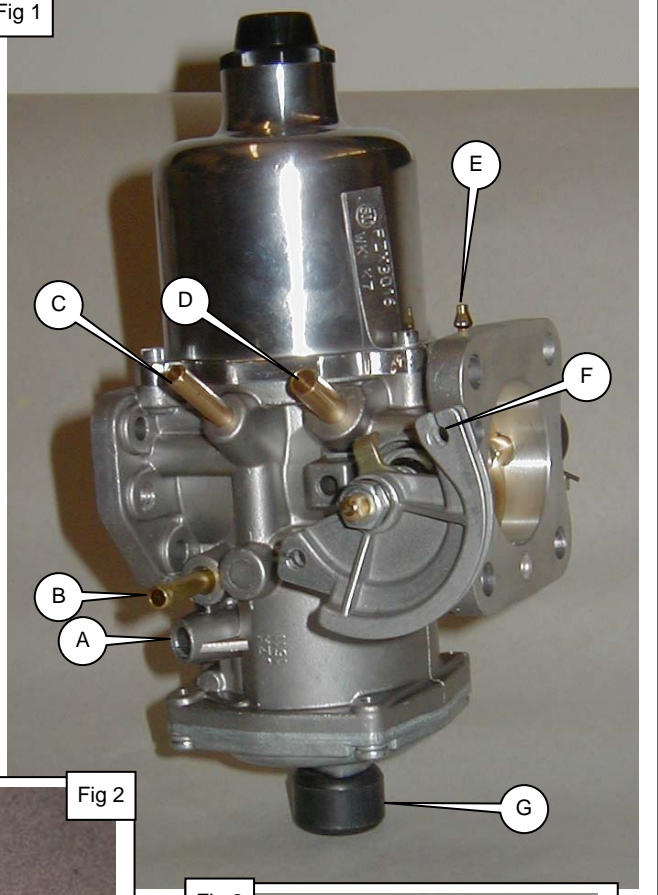


Fig 2

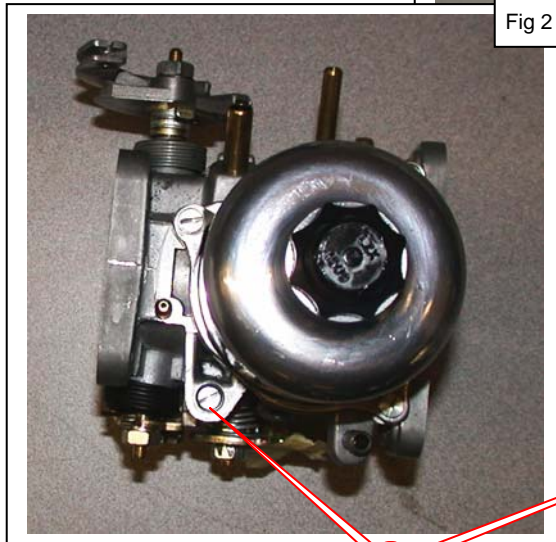
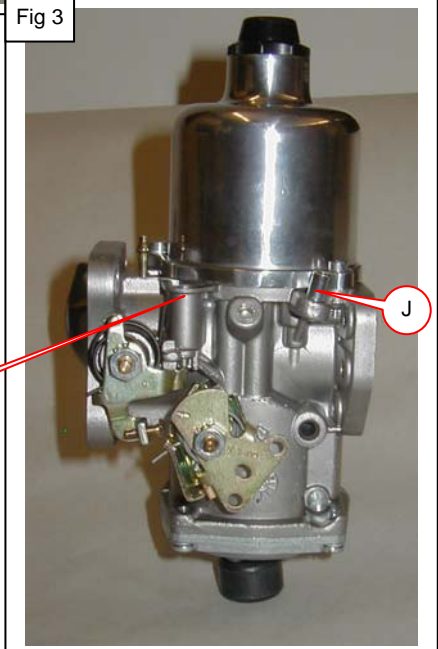


Fig 3



13
14
15
16
17
18
19
20
21
22
23
24
25
26
27
28
29
30
31
32
33
34 **Please Note: Replacing the Zenith carburetor on an MGB is**
35 **illegal.** You cannot modify, swap or otherwise alter the pollution
36 control equipment . Whether or not vehicles are inspected for such
37 modifications will be up to your local authorities. Be advised that
38 inspections may be mandatory at some time in the future.

39

Ref Description

- P O-ring Seal (float chamber)
- Q Jet (fuel pick-up)
- R Float
- S Needle & Seat

40
41

42 This conversion kit does not come with an
43 air filter. The filter off the Zenith carb cannot
44 be used.

45

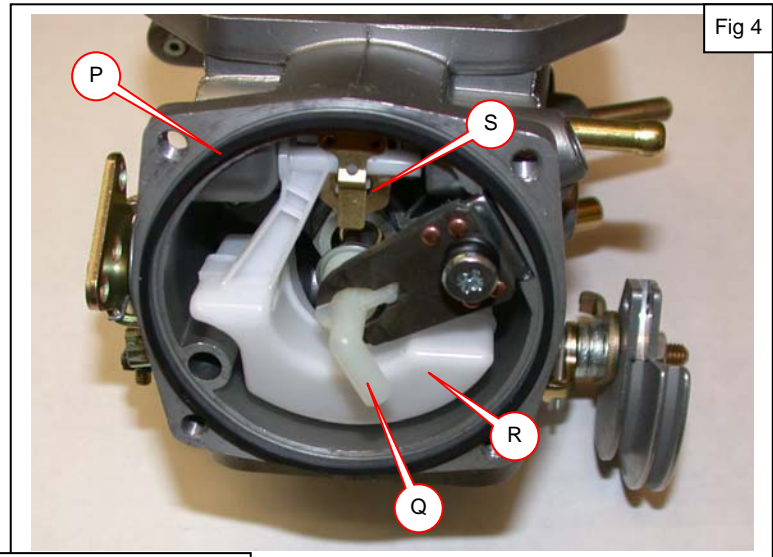
46 We suggest using the K&N Air Filter
47 222-905. It flows well and because of the
48 shape, it will fit pretty well.

49

50

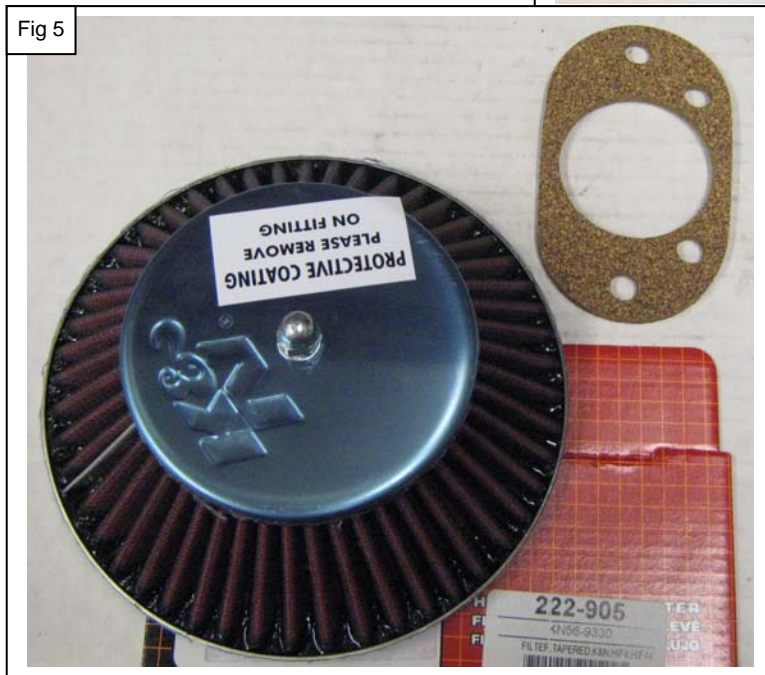
51

52



53

Fig 5



54

55

56

57

58

59

60

61

62

63

64

65

66

67

68

69

70

71

72

73

74

75

Fig 6

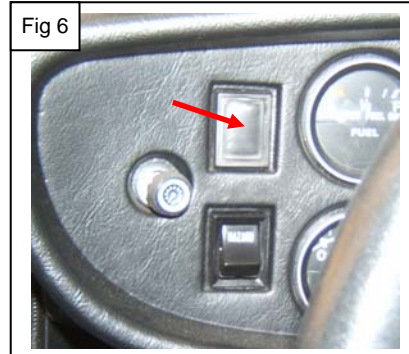
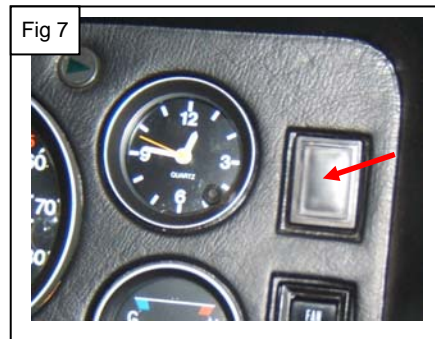


Fig 7



76 **Installation Tips**

77 We do not have step-by-step illustrated instructions for this conversion, but we do know some of the
78 questions that come up. After removing the ZS carb and all traces of the gasket, fitting the SU carb is
79 straightforward. On page 1 we have identified the hose connections you need to make. You will be using
80 the original throttle cable. The water choke will have to be blocked off. We offer a blanking plate 052-341
81 and a gasket 295-040, but the port can be blocked off easily enough any number of ways. The manual
82 choke cable needs a home, and the most convenient place is the hole for a switch which was not used.
83 (See Fig 6,7). Cut a rectangular piece of sheetmetal the size of the blanking plug, and drill a suitable
84 sized hole for the choke cable. Paint that one black and set it aside. Cut another piece of sheetmetal for
85 behind the dash, and use the nut on the choke cable to pull the two pieces of sheetmetal together,
86 effectively clamping the dash. The choke cable run through the position indicated in Fig 7 will be located
87 near the spot where it was found on earlier MGBs, which is convenient to your right hand.

88

113
114
115
116
117
118
119
120
121
122
123
124
125
126
127
128
129
130
131
132
133
134
135
136
137
138
139
140
141
142
143
144
145
146
147
148
149
150
151
152
153
154
155
156
157
158
159
160
161
162
163
164
165

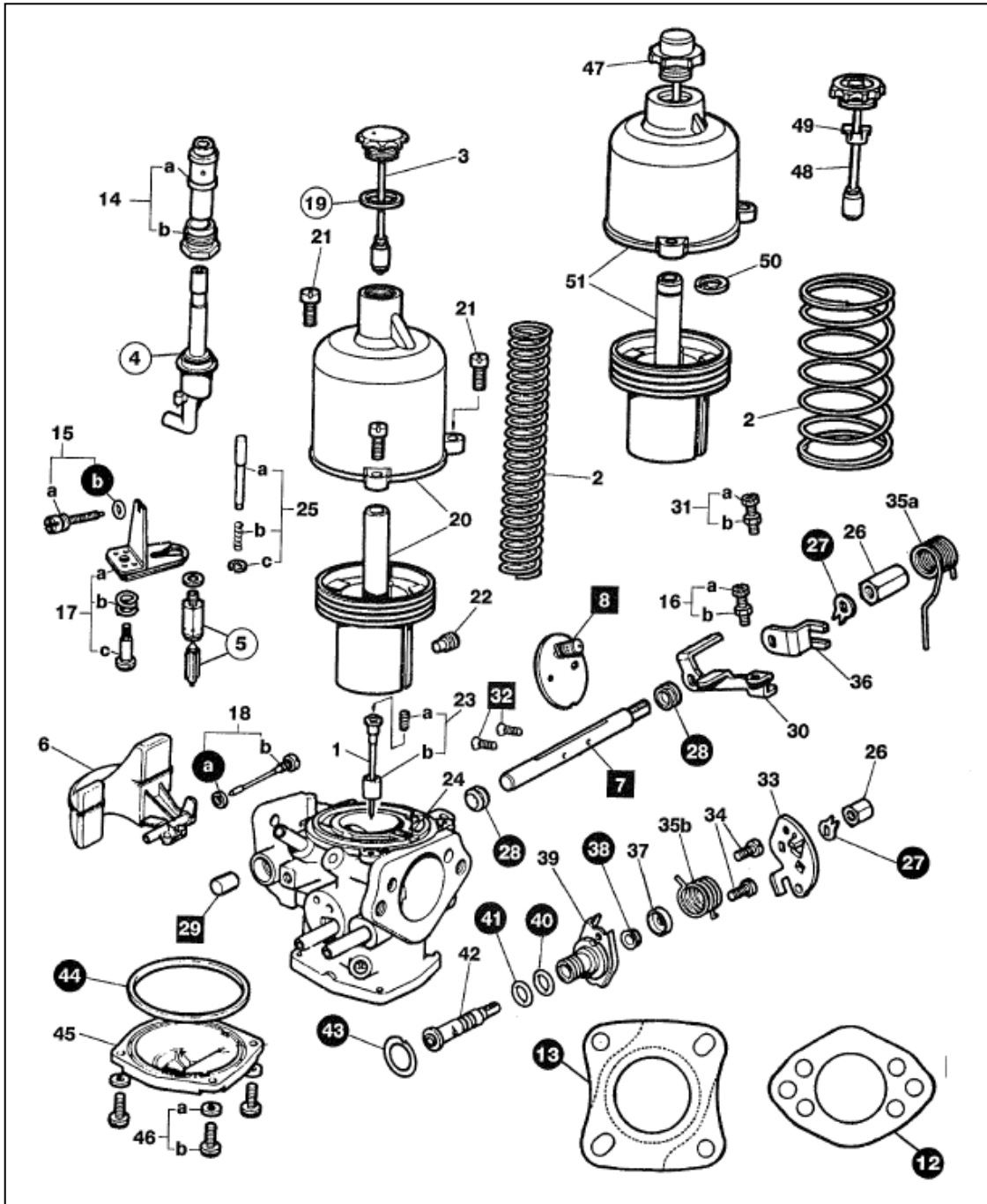
HIF44 Service & Rebuild Kits

Service Kit 375-627 includes items in diagram below with illustrations #s in a ● ○

Includes a full set of gaskets and seals, main jet and needle valve and seat for the float bowl.

Rebuild Kit 375-628 includes items in diagram below with illustration #s in a ● ○ ■

Includes a full set of gaskets and seals, main jet, needle valve and seat, throttle spindle, throttle disc and screws and new spindle bushes.



Moss Motors, Ltd.

440 Rutherford Street, Goleta, California 93117

In the US & Canada Toll Free (800) 667-7872 FAX (805) 692-2510 (805) 681-3400

Moss Europe Ltd.

Hampton Farm Industrial Estate, Hampton Road West, Hanworth Middlesex, TW13 6DB

In the UK: 020-8867-2020 FAX:- 020-8867-2030