



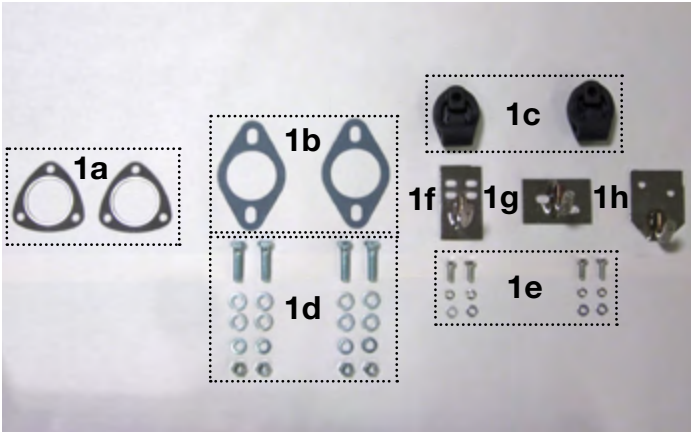
TOURIST TROPHY®

MGB Sport Exhaust System

Installation Instructions

For 1962-74.5 & Dual Carburetor Converted 1975-80

PART # 459-075



Bill of Materials

Ref	QTY	Moss US	Moss Europe	Description	Notes
1a	2	297-550	CAM1172	Gasket, front pipe to OE manifold	
1b	2	772-651	772-651	Gasket, pipe flanges	
1c	2	180-659	180-659	Hanger, Exhaust, Rubber	
1d	4	053-071	053-071	Bolt, $\frac{3}{8}$ -16" x 1 $\frac{1}{2}$ " Hex Head, GR5	Bolting pipe flanges together
	8	324-860	WP9 or GHF302	Washer, Flat, $\frac{3}{8}$ " ID	Bolting pipe flanges together
	4	772-070	772-070	Washer, Lock, $\frac{3}{8}$ ", Zinc	Bolting pipe flanges together
	4	770-275	770-275	Nut, $\frac{3}{8}$ -16", Grade 5	Bolting pipe flanges together
1e	4	322-230	GHF117	Setscrew, Hex Head, $\frac{1}{4}$ -28" x $\frac{3}{4}$ "	Bolting hangers to the chassis
	4	315-175	WP127	Washer, Flat, $\frac{1}{4}$ "	Bolting hangers to the chassis
	4	324-020	GHF331	Washer, Lock, $\frac{1}{4}$ ", Zinc	Bolting hangers to the chassis
1f	1	053-470	053-470	Hanger, Exhaust, Steel, Middle	Four Holes above hook
1g	1	459-089	459-089	Hanger, Rear, Chrome bumper	One hole on each side of hook
1h	1	053-471	053-471	Hanger, Rear, Rubber bumper	Two holes above hook
2a	1			Down pipe	Available as a special order only
2b	1	459-079	459-079	Middle or Intermediate pipe	
2c	1	459-077	459-077	Rear pipe, w/muffler	

Installation Instructions

1. Raise up the car and place it on jack stands. Do not work on the car while it is on the jack. Completely remove the current exhaust system, from the cast iron manifold to and including the muffler. Remove the two factory exhaust hangers also. These will be replaced with new hook style hanger brackets included with the system.
2. Locate the three exhaust hanger brackets. Identify which mid-bracket set of holes you need to use and which rear hook bracket.
3. Gather the head pipe and the two, 3-bolt gaskets from the kit. Slide the gaskets onto the studs of the exhaust manifold with the wide side of the metal fire ring facing toward the manifold. Slip the new head pipe up into place and secure using the factory hardware. Tighten the nuts. Note: It is not unusual for the tail end of the head pipe to contact the transmission cross member. Once the second pipe is in place and tightened, the pipe will move down. Then after running the car and heating the exhaust system up, it will relax and the clearance will stay. Even upon disassembly.



Figure 2a



Figure 2b

For U.S. spec rubber bumper cars:

Install the mid-bracket to the car using the upper holes, 1/4" bolts, lock washers and flat washers. Use 053-471 rear hanger bracket. This will position the exhaust system low enough to clear the rear axle and rubber bumper.

For chrome bumper cars:

Install the mid-bracket to the car using the lower holes, the 1/4" bolts, lock washers and flat washers. Use 459-089 rear hanger bracket.

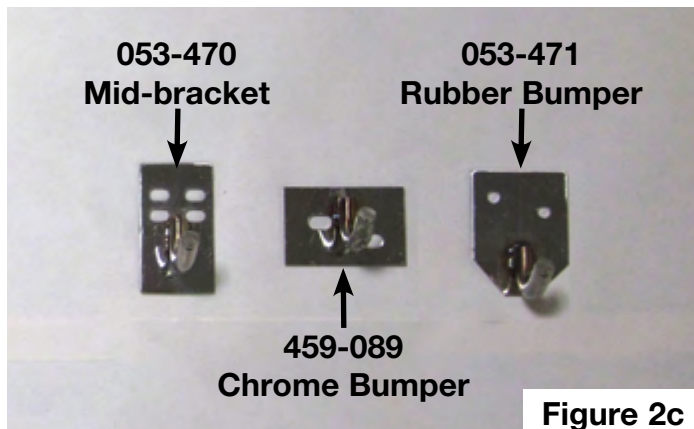


Figure 2c



Figure 3

4. Next, slip the rubber hangers onto the hooks on the rear of the mid-pipe and the rear of the muffler. Use the longest hole in the rubber hanger. Apply silicone lubricant (or WD-40) to make installation easier.



Figure 4a



Figure 4b

5. Gather together one flange gasket, two $\frac{3}{8}$ " x $1\frac{1}{2}$ " bolts, two $\frac{3}{8}$ " nuts, four flat washers, and two lock washers. Slip a flat washer onto each bolt. Apply lubricant to the upper hole in the rubber hanger on the mid-pipe. Install the mid-pipe in the car by slipping the rubber hanger over the hook installed forward of the axle. Align the front flange with the flange on the tail end of the head pipe. Slip the gasket between the flanges and install the bolts, flat washers, lock washers, and nuts. Align the connection and tighten the bolts.

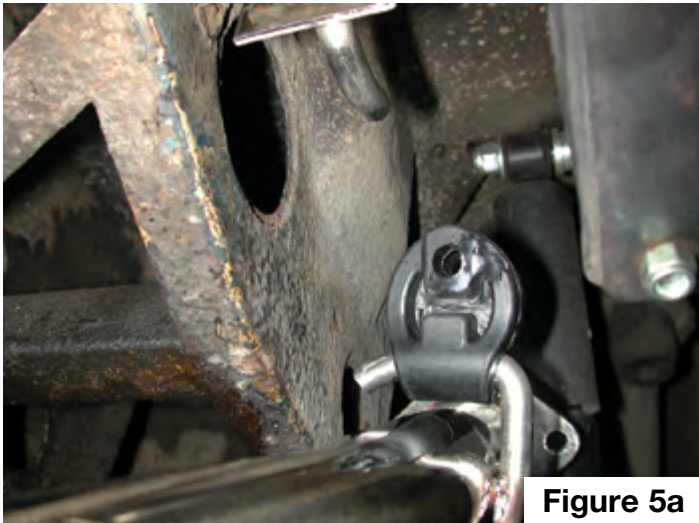


Figure 5a



Figure 5b

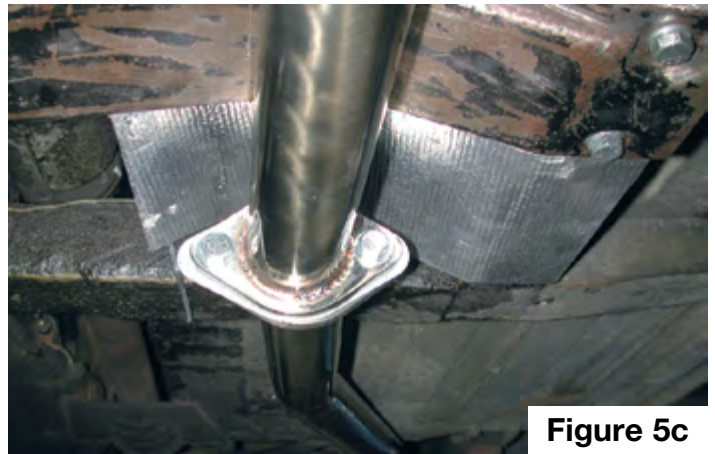


Figure 5c

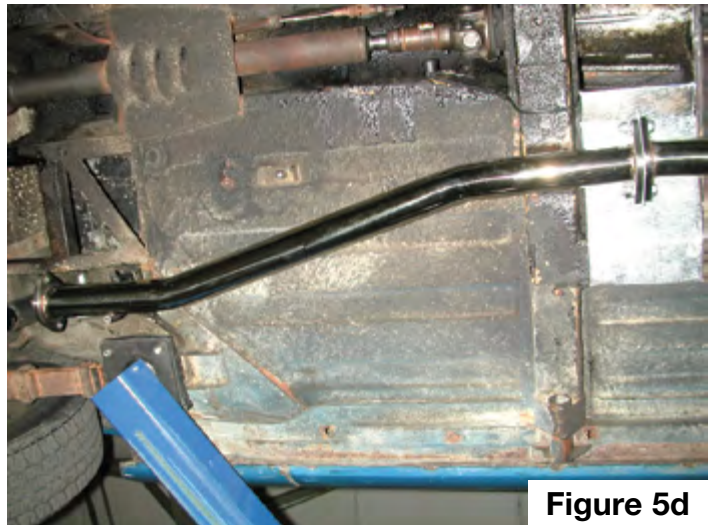


Figure 5d

Installation Instructions

6. Gather the remaining hardware and gasket. Slip a flat washer onto each bolt. Apply lubricant to the upper hole in the rubber hanger on the rear of the muffler. Install the tail pipe (muffler) in the car by sliding the rubber hanger over the hook at the rear of the car. Align the flanges, slip a gasket in between, then install a bolt, flat washer, lock washer, and nut into each hole. Align the connection and tighten the bolts.

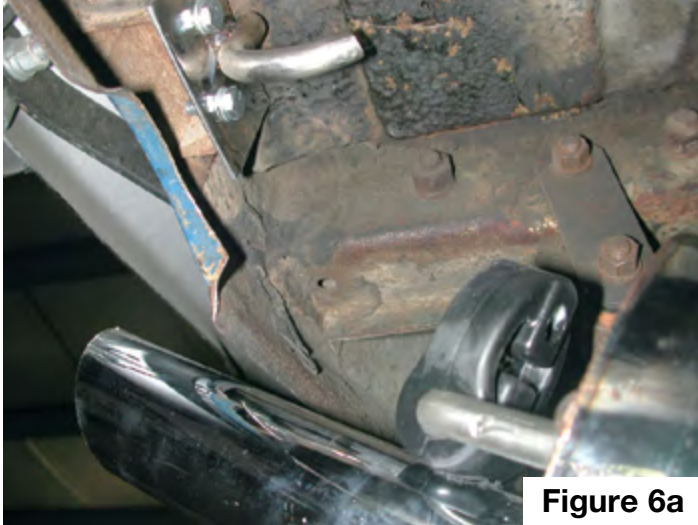


Figure 6a



Figure 6b

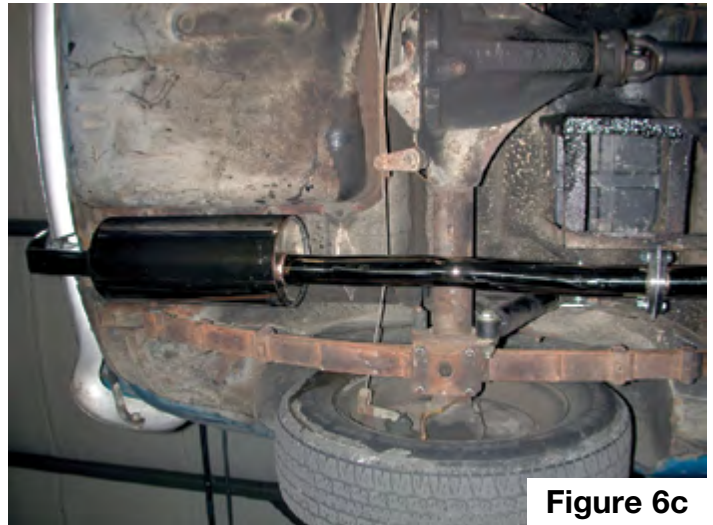


Figure 6c

7. If your system needs to shift side to side, the rubber hangers can slide on the rod welded to the mid-pipe and muffler or the metal hooks can be loosened and adjusted. Note: When the system is first run and heated up there will be an odor. It is advisable to drive the car with the top down for the first few drives.

Designed and Distributed by Moss Motors, Ltd.

For questions or comments please contact:

Moss Motors, Ltd.

440 Rutherford Street, Goleta, California 93117
In the US & Canada Toll Free (800) 667-7872
LOCAL (805) 681-3400 FAX (805) 692-2510



Moss Europe Ltd.

Unit 16 Hampton Business Park Bolney Way
Feltham TW13 6DB, United Kingdom
In the UK: 020-8867-2020 FAX: 020-8867-2030