



# High Torque Starter Installation Instructions

PART # 541-547

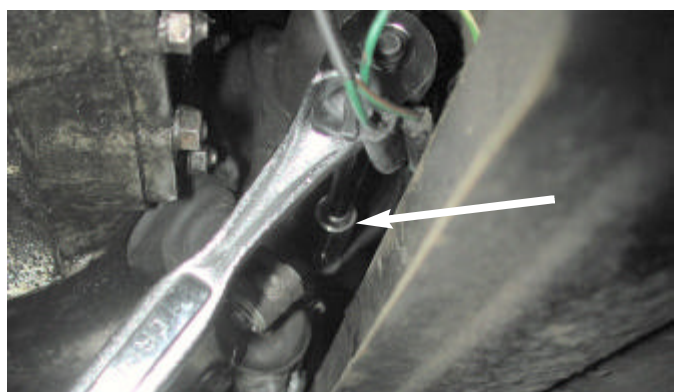
440 Rutherford St. P.O. Box 847 Goleta, CA 93117  
1-800-642-8295 • FAX 805-692-2525 • www.mossmotors.com

Tools needed: 3/8" drive ratchet, 6" extension, 10" extension, 7/16" socket, 9/16" deep well socket, 9/16" SWIVEL-socket, 9/16" combination wrench

1. Open the hood and **disconnect the battery.**
2. Place the front of the car on jackstands. Do not work on the vehicle without supporting it on jackstands.



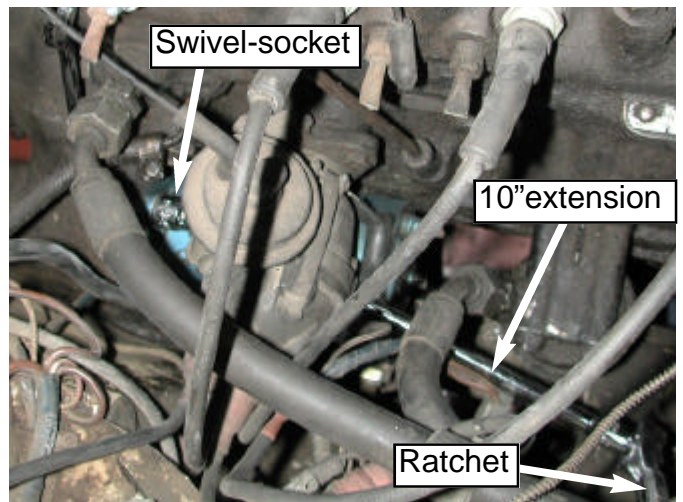
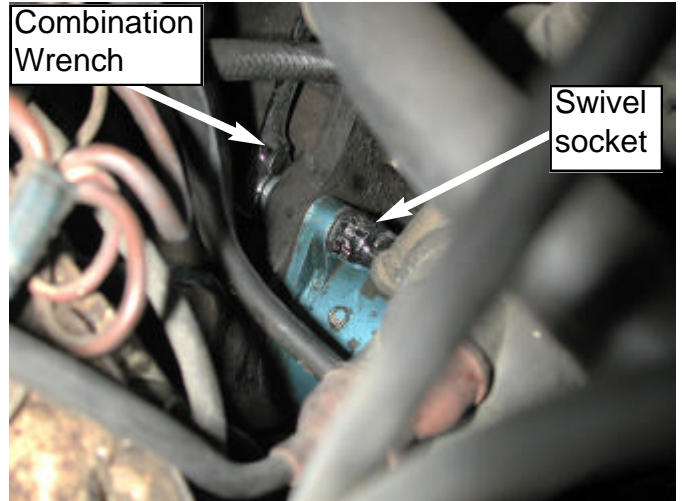
3. Remove the lower starter bolt, washer and nut. Use the 9/16 combination wrench on the bolt head and the 9/16 deep socket with 6" extension on the nut.



# Sprite / Midget Installation Instructions



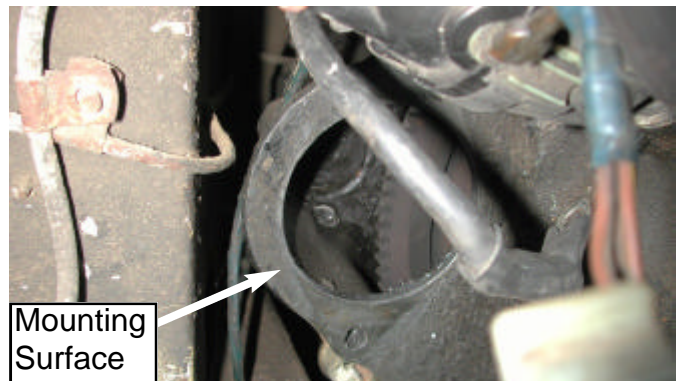
4. Use the ratchet and 7/16" socket to remove the positive cable from the starter.



6. Remove the starter from the bellhousing and car.



5. Remove the upper starter bolt, washer and nut. Use the 9/16 combination wrench on the nut and the 9/16 swivel-socket with 10" extension on the nut. Support the starter when you take out the bolt.

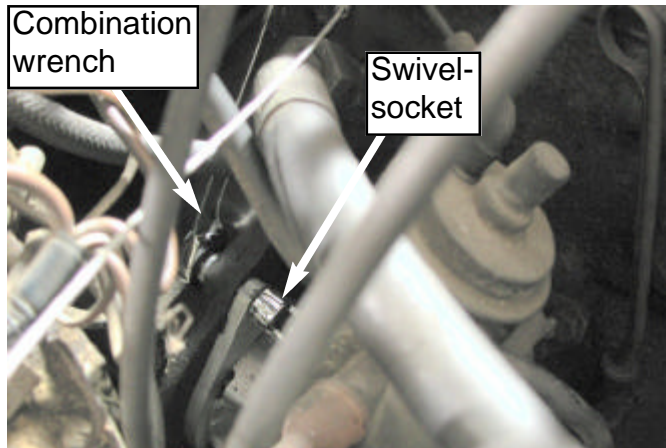


# Sprite / Midget Installation Instructions



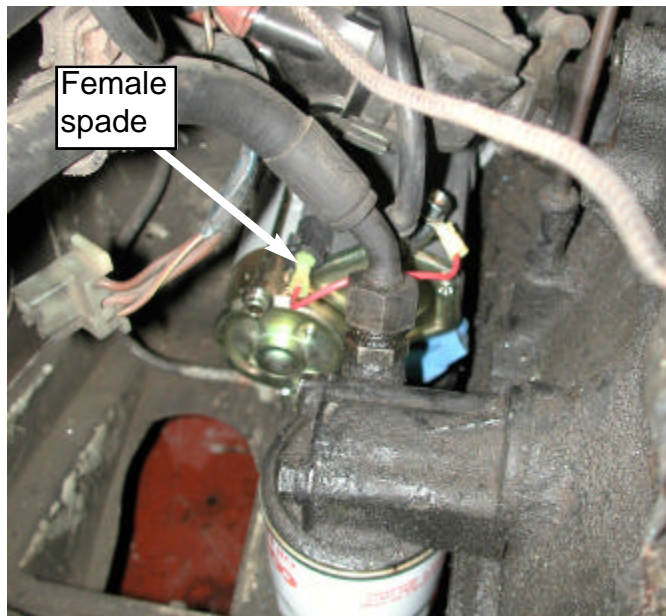
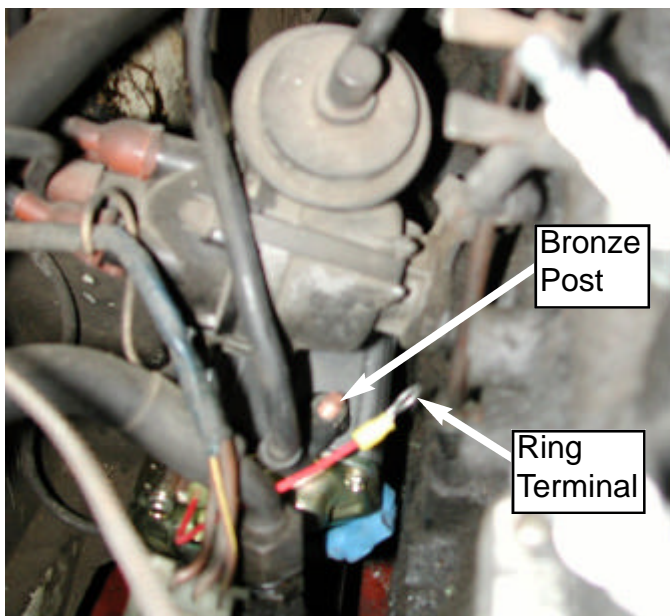
7. Clean the starter mounting surface of any debris and dirt. Also, remove the nut and washer from the bronze post on the high torque starter.

8. Lower the new high-torque starter into place. Install the starter with the bronze-colored post pointing up. Insert a bolt through the upper eye of the starter mount and through the bellhousing. Place a washer over the bolt and thread on the nut. Use a 9/16" combination wrench, a 9/16" swivel socket, a 10" extension and a 3/8" drive ratchet to tighten the bolt. **Leave the bolt slightly loose so that the starter can be moved when inserting the lower starter bolt.**



10. Locate the short red jumper harness included in the kit. Slide the female end over the spade connector on the high-torque starter.

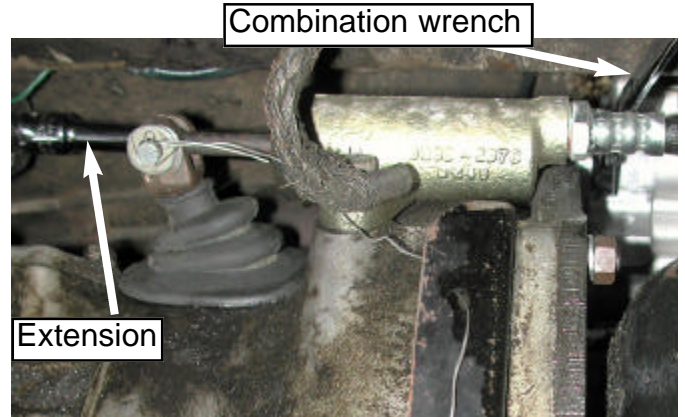
11. Slide the ring terminal of the battery cable over the bronze-colored post on the starter. The cable may need to be rerouted over the distributor. Slide the ring terminal of the red jumper harness (Step 10) over the bronze-colored post. Slide on the washer removed in Step 7, thread on the nut and tighten.



# Sprite / Midget Installation Instructions



12. Under the car, insert a bolt through the lower eye of the starter mount and through the bellhousing. Place a washer over the bolt and thread on the nut. Use a 9/16" combination wrench on the bolt. Use a 9/16" deep-socket, a 6" extension and a 3/8" drive ratchet on the nut. Tighten the bolt to 30 ft-lbs.



13. Tighten the upper starter mounting bolt (Step 8) to 30 ft-lbs.

14. Lower the car off of the jackstands.

15. Double-check that all electrical connections are tight. Then reconnect the battery. **Put the car in neutral and set the emergency brake.**

16. Disconnect the ignition coil power lead and crank the engine. Listen for any grinding or abnormal sounds. If all sounds well, reconnect the ignition coil power lead and turn the engine over.

17. Close the hood.

18. Enjoy your new Moss High-Torque Starter! See [MossMotors.com](http://MossMotors.com) for all of your Midget and Sprite accessory and performance needs.