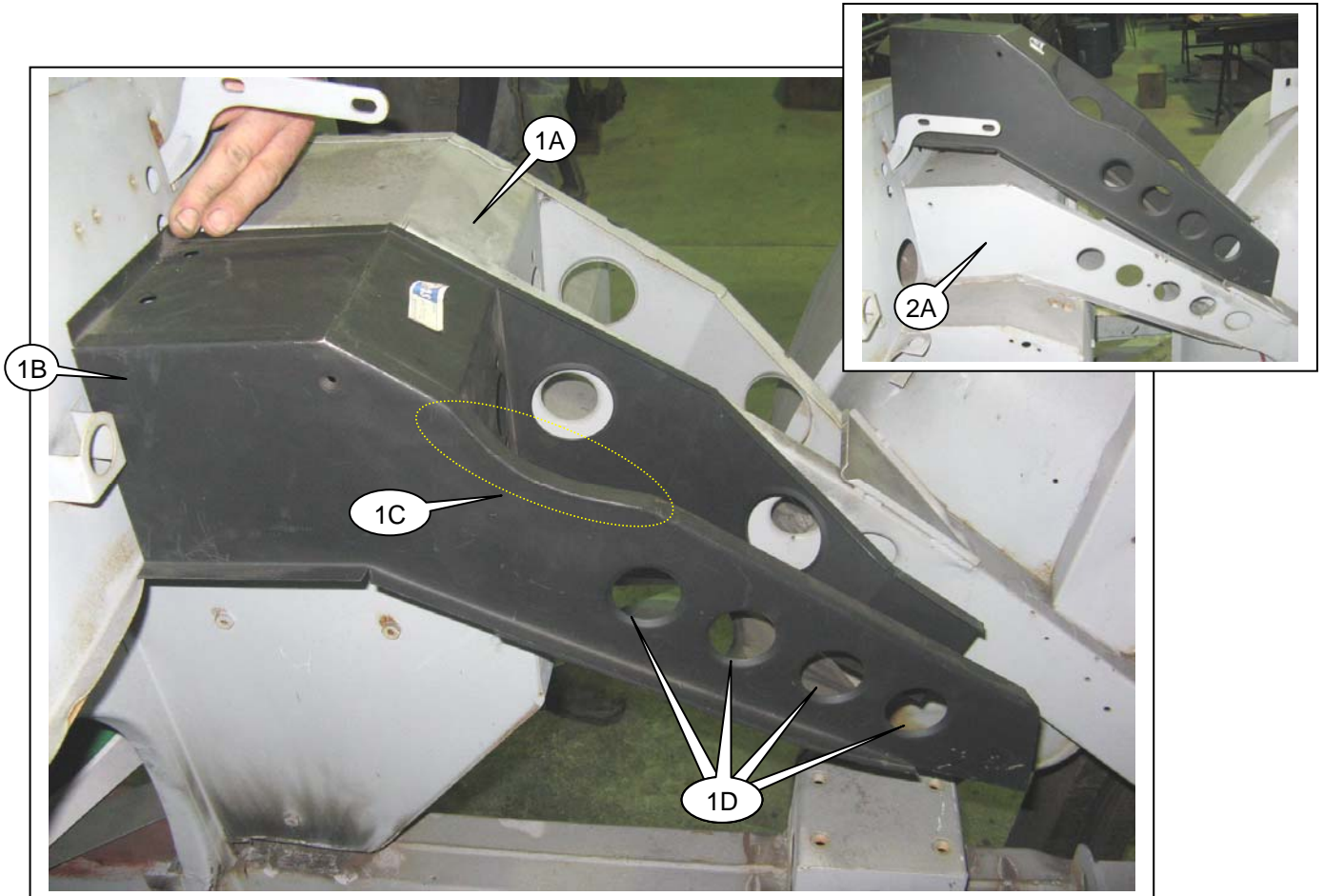


Supplemental Information for Austin Healey Pedal Box Assembly

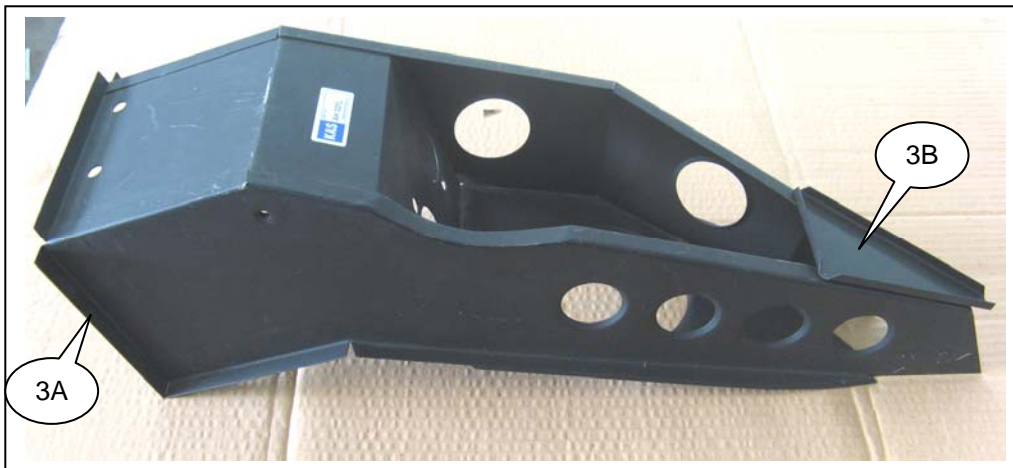
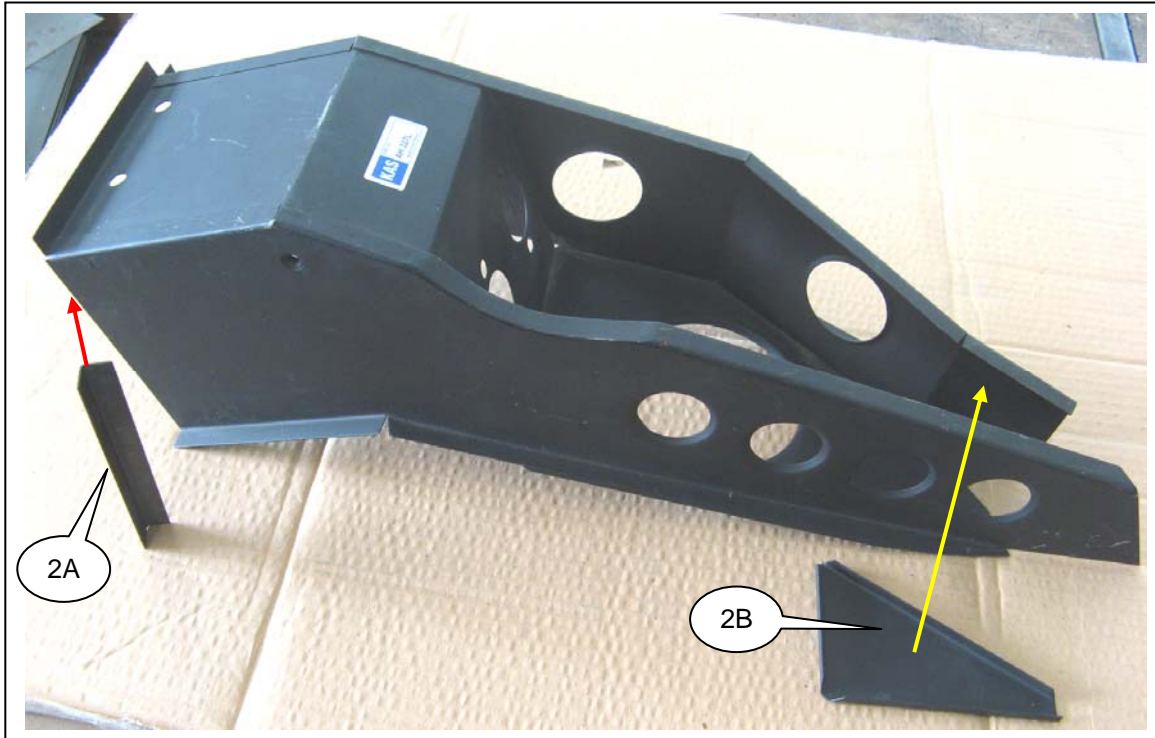


There were three different pedal box assemblies used during the production of the 6 cylinder Austin Healeys. We offer all three.

805-800 PEDAL BOX ASSEMBLY, R/H BN4-BJ8 (All 6 cylinder cars)
805-810 PEDAL BOX ASSEMBLY, L/H BN4-BJ7
805-812 PEDAL BOX ASSEMBLY, L/H BJ8

The difference between the BN4-BJ7 pedal box (805-810, 1A) and the BJ8 pedal box (805-812, 1B) is the semi-circular relief (1C) the top edge of the inner side section of the BJ8 pedal box. This relief is not present in the BN4-BJ7 pedal box. (2A)

This modification was required to provide clearance for the 2" carburetors and air cleaners on a BJ8. To facilitate this modification the BJ8 pedal boxes were manufactured with four holes (1D) on the inner side piece instead of the five holes found on the same section of the BN4-BJ7 pedal box (2A).



The 805-812 for the BJ8 is made up of 3 main pieces, two sides and one centre section which are spot welded together (as original). It also includes a short angle section (2A) which connects the vertical side to the firewall when it is in position (3A). There is also a small triangular shaped piece ((2B) that welds on top of the two side sections (3B) where they converge on both sides of box strut from the suspension tower.

We are grateful for the assistance of Greg Kilmartin in preparing this information. Photos courtesy of Greg Kilmartin.



Moss Motors, Ltd.

440 Rutherford Street, Goleta, California 93117
In the US & Canada Toll Free (800) 667-7872 FAX (805) 692-2510 (805) 681-3400

Moss Europe Ltd.

Hampton Farm Industrial Estate, Hampton Road West, Hanworth Middlesex, TW13 6DB
In the UK: 020-8867-2020 FAX:- 020-8867-2030